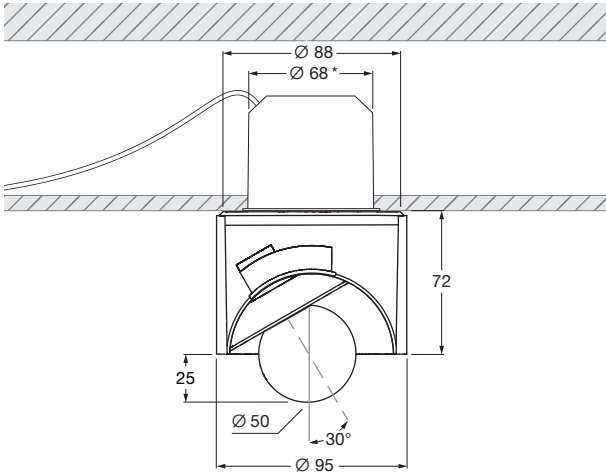


Coro moon alto flat pro  
datasheet

LED ceiling spotlight with cylindrical base and fireball light source (swivable). flat model for mounting on hollow ceilings or solid ceilings with ceiling box. Version with remote power supply unit, connection to external constant current power source (driver). Dimmable via customer-supplied dimmable power supply unit. The innovative LED fireball technology creates a special lighting effect - direct light in forward direction and atmospheric illumination by the fireballs indirect light. The fireball as a light source can be rotated by 360° (with stop), swiveled by 30° and has a light cone of 50°.



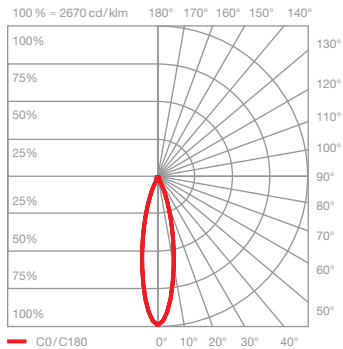
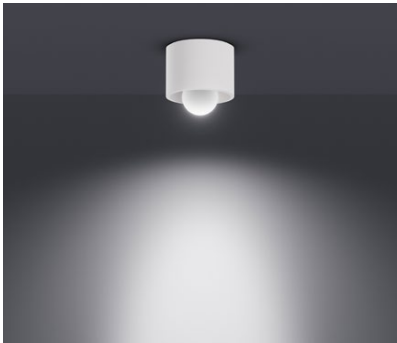
\* cut-out dimensions

dimensions in mm

technical data Coro moon alto flat pro

properties	material	aluminium, glass, PVD coated, painted, plastic
	turning range	360° (with stop)
	mobility head	30°
	weight	0,7 kg
surface	head	bronze, matt gold, rose gold, matt silver, matt white, matt black, phantom, black phantom
	tube	matt white, matt black
Occhio LED	average life time	> 50.000 hrs
	energy efficiency class (luminous efficiency)	F (99lm/W, @4000K single color)
	power	LED 9W
	color rendering index	CRI Ra 92
	color temperature (color consistency)	single color: 2700K, 3000K, 4000K (2-step) color tune: 2200–3500K (2-step)                      2700–4000K (2-step)
electricity	dimming	with suitable power supply unit
	connection	single color (1-channel): max. 500 mA / 18VDC color tune (2-channel): max. 1000 mA total current (I <sub>1</sub> + I <sub>2</sub> ) / 9VDC per channel
	permitted operating conditions	max. 30°C for indoor use only

Coro moon alto flat pro  
lighting effects



**moon**

direct, glare-free light,  
beam angle approx. 50°

optics: Occhio fireball

power: high color 9 W

luminous flux:    2700 K    670 lm  
                         3000 K    720 lm  
                         4000 K    820 lm  
                         2200–3500 K    510–660 lm  
                         2700–4000 K    580–710 lm