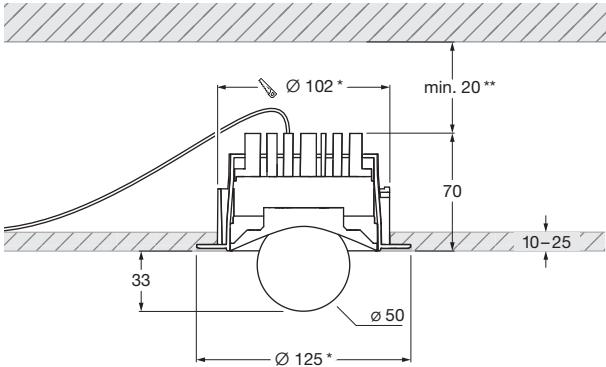
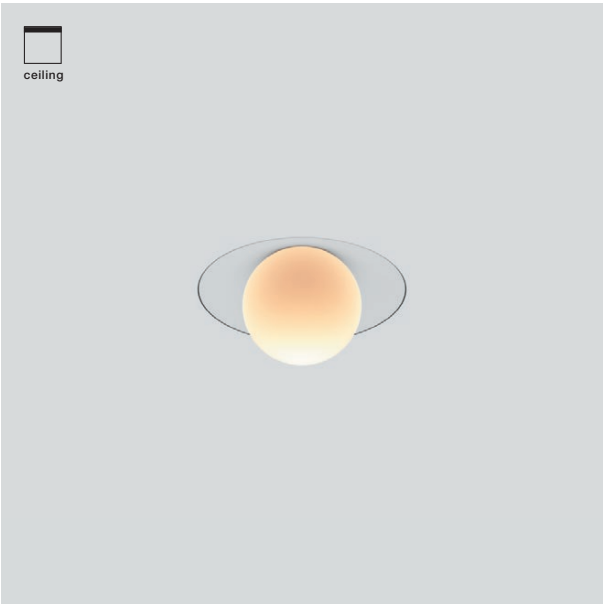


Coro moon piano v pro pure
datasheet

LED recessed spotlight with fireball light source (downlight non-tiltable) for hollow ceilings or solid ceilings with ceiling box. pure model for frameless installation. The spotlight is mounted with a separate plastering ring. Version with remote power supply unit, connection to external constant current power source (driver). Dimmable via customer-supplied dimmable power supply unit. The innovative LED fireball technology creates a special lighting effect - direct, downward-facing light and atmospheric illumination by the fireballs indirect light. The fireball as a light source has a light cone of 50°.

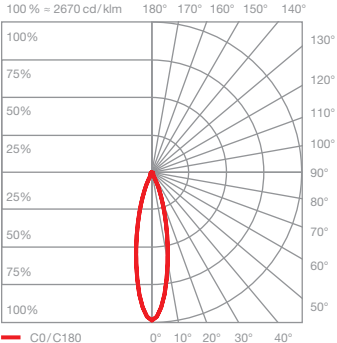


* Cutout and surrounding fold required
for mounting; matching step grinder
optionally available
** minimum thermal distance, installation
height depending on driver

dimensions in mm

technical data Coro moon piano v pro pure		
properties	material	aluminium, glass, painted, plastic
	weight	0,6 kg
surface	tube	matt white, matt black
Occhio LED	average life time	> 50.000 hrs
	energy efficiency class (luminous efficiency)	F (99 lm/W, @4000 K single color)
	power	LED 9 W
	color rendering index	CRI Ra 92
	color temperature (color consistency)	single color: 2700 K, 3000 K, 4000 K (2-step) color tune: 2200–3500 K (2-step) 2700–4000 K (2-step)
electricity	dimming	with suitable power supply unit
	connection	single color (1-channel): max. 500 mA / 18 VDC color tune (2-channel): max. 1000 mA total current (I ₁ + I ₂) / 9 VDC per channel
	permitted operating conditions	max. 30°C for indoor use only

Coro moon piano v pro pure
lighting effects



moon

direct, glare-free light,
beam angle approx. 50°

optics: Occhio fireball

power: high color 9 W

luminous flux:	2700 K	670 lm
	3000 K	720 lm
	4000 K	820 lm
	2200–3500 K	510–660 lm
	2700–4000 K	580–710 lm